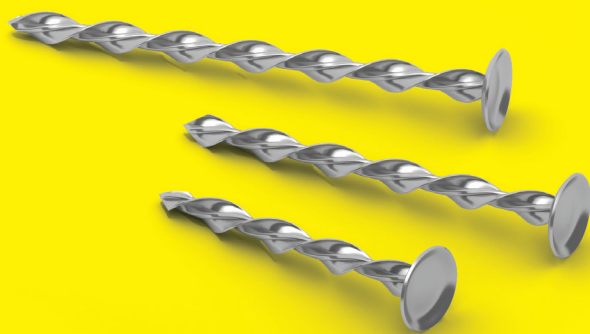
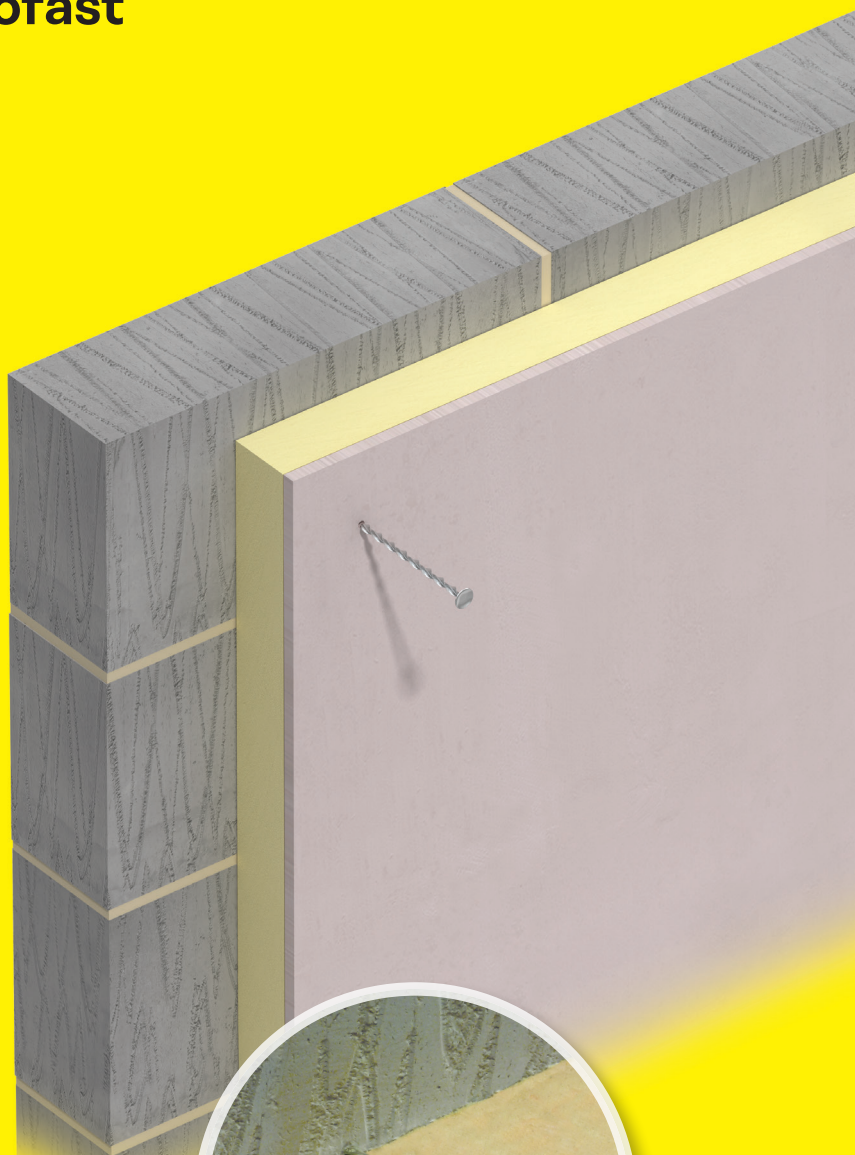


Scan QR code to view  
our Ancon Staifix Range

# Anchors for drywall and insulated plasterboard

## Ancon<sup>®</sup> Staifix Insofast ISF 18A

- Class A1 non-combustible mechanical fixing
- Helical shaft minimises heat loss through cold bridging
- Countersunk head prevents tearing
- Dished head retains filler
- Dependable performance
- Can be used to replace or to complement 'dot and dab' installation
- Suitable for fixing into a wide range of construction materials
- Fixes panels to lightweight block without pre-drilling



# Ancon® Staifix Insofast ISF 18A

A one piece steel fastener with a dish-profiled head for mechanically securing drywall and insulated plasterboard panels to walls.

This Class A1 non-combustible metal fastener has a self-tapping helical shank with work-hardened blades that cut into a wide range of masonry and timber substrates.

## Benefits

Ancon Staifix Insofast ISF18A fixings are suitable for use with all types of insulated drywall boards. They can be used in conjunction with 'dot and dab' adhesive (3 per board) or in place of it (12 per board).

Critically, these high integrity mechanical fixings ensure stability of the boards in the event of a fire to prevent escape routes from becoming blocked.

Heat loss through cold bridging is minimised thanks to a thermally-efficient spiral shaft; the cross-sectional area is just 25% that of a solid shaft of equal diameter.

## Installation

The fixings are driven-in by the adaptor powered by a standard light SDS hammer drill (1-2kg with 2-3 joules). Alternatively, these fixings can be installed using a series of light blows from a rubber/plastic mallet. The anchor drives directly into aircrete blocks and softwood timber. A 5mm pilot hole is recommended for brick, concrete block and hardwood. A 6mm pilot hole is required for structural concrete and engineering brick.

The embedment depths stated do not include any surface coverings, such as plaster, over the host material. Longer fixings may be required to achieve the necessary embedment in the backing structure.

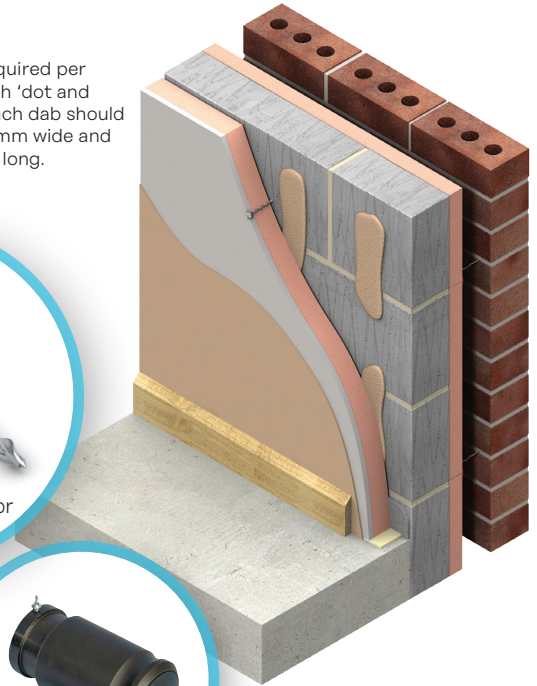
Three fixings required per panel if used with 'dot and dab' method. Each dab should be 50mm to 75mm wide and approx. 250mm long.



ISF 18A fixing and standard SDS adaptor

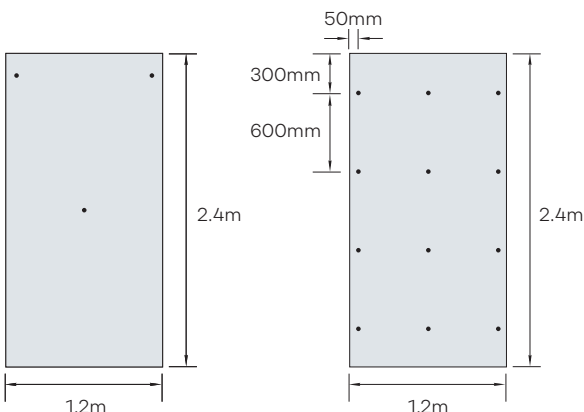


Professional SDS Adaptor Set



## Product Specification

<b>Material</b>	Zinc plated AISI 1008 Steel Austenitic 304 Stainless Steel
<b>CSA of shank</b>	9mm <sup>2</sup>
<b>Typical load (1mm deflection)</b>	Aircrete 649N Brick 622N Softwood 681N
<b>Typical pull through</b>	(9.5mm plasterboard) 255N (12.5mm plasterboard) 340N
<b>Embedment depth</b>	Aircrete Block 50-75mm Brick/Concrete Block 40-60mm Softwood 35-50mm
<b>Available lengths</b>	65mm 85mm 105mm 125mm 145mm



● = Position of fixing  
If used with 'dot and dab' method

● = Position of fixing  
If used instead of 'dot and dab' method

# Leviat®

A CRH COMPANY

President Way, President Park, Sheffield S4 7UR  
Tel: +44 (0) 114 275 5224  
Email: info.uk@leviat.com  
Ancon.co.uk | Leviat.com

Manufactured under license of European patent numbers EP1307303 and EP1710372.